

MONTHLY MEMBERSHIP PROGRESS REPORT

LOCATION PRINCE EDWARD ISLAND

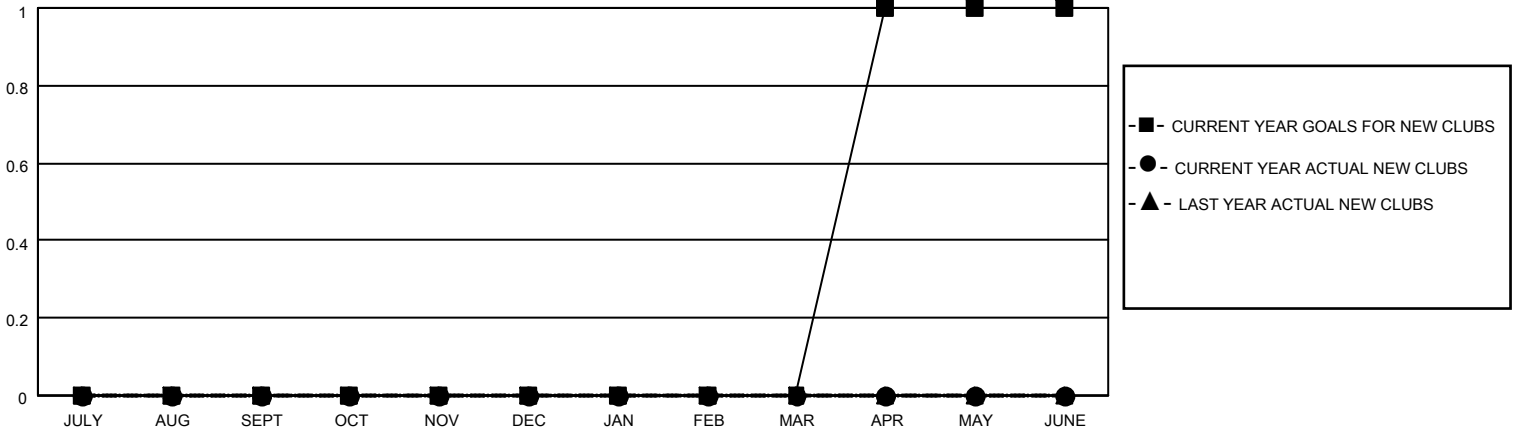
District N 1

Results as of: 4/30/2023

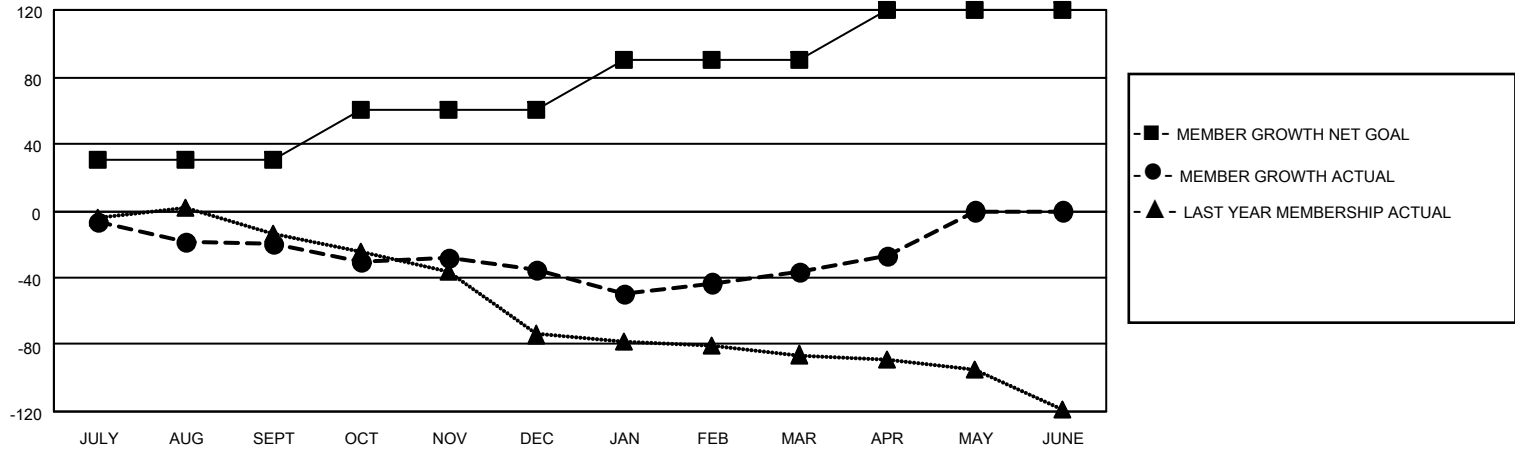
Clubs			
RESULTS FOR 2022-2023			
QUARTER	NEW CLUB GOAL	NEW CLUBS	DROPPED CLUBS
JULY/AUG/SEPT	0	0	1
OCT/NOV/DEC	0	0	0
JAN/FEB/MAR	0	0	0
APR/MAY/JUNE	1	0	0

Members			
RESULTS FOR 2022-2023			
QUARTER	MEMBER GROWTH NET GOAL	MEMBER GROWTH ACTUAL	DROPPED MEMBERS ACTUAL (including transfers)
JULY/AUG/SEPT	30	11	27
OCT/NOV/DEC	30	28	43
JAN/FEB/MAR	30	57	53
APR/MAY/JUNE	30	22	10

GOALS AND ACTUAL NEW CLUBS CUMULATIVE



GOALS AND ACTUAL MEMBERS CUMULATIVE



DROPPED CLUBS: 1

37 CLUBS OF 78 ADDED 1 OR MORE NEW MEMBERS

GENDER DISTRIBUTION

MALE	1,122 (71.28%)
FEMALE	451 (28.65%)
NON BINARY	0 (0.00%)
PREFER NOT TO ANSWER	1 (0.06%)

DROPPED MEMBERS

[CLICK HERE FOR CUMULATIVE MEMBERSHIP DATA](#)

DECEASED	24
CLUB CANCELLED	0
OTHER	109
TOTAL	133

TOTAL FAMILY UNIT MEMBERS	277
FAMILY MEMBERS PAYING HALF DUES	141